

# Alaska Department of Fish and Game

Habitat Section  
Southeast Region



## 106-22-10080 Tributary 5

## ADDITION

**Water body name:** Sophie's Stream

**Survey date:** 8/25/2025

**Quad:** Petersburg A-2

**Species & Lifestage:**

**Upper Reach Latitude:** 56.182132 **Longitude:** -132.568579

**Survey crew:** TE, CD, NJ

**Lower Reach Latitude:** 56.177568 **Longitude:** -132.572466

**Findings:** We surveyed this uncataloged stream up to an anadromous fish barrier using a backpack electrofisher, baited minnow traps and GPS and captured juvenile coho salmon, Dolly Varden and cutthroat trout. We also visually identified adult pink salmon spawning throughout the stream. At its lower reaches, this stream flows at a mild 1–2% gradient with predominantly large and small gravel substrate providing quality spawning and rearing habitat. At waypoint 1034, the channel becomes highly incised with mostly bedrock substrate and increases grade to 5%. At waypoint 1035, we identified a bedrock water fall with water cascading nearly vertical for 30 ft with no jump pool at the base. This is likely blocking any anadromous fish passage upstream, even in higher flows. (Table 1; Figures 1–3)

**Recommendations:** Add this uncataloged stream to the anadromous waters catalog up to waypoint 1034 for rearing coho salmon and spawning pink salmon and add a barrier point at waypoint 1035 (Figure 4).

**Nomination:** Pending

Table 1.–106-22-10080 Tributary 5 survey data.

Waypoint	Latitude	Longitude	Notes	Stream Width ft	Stream Substrate	Habitat Features	Gradient %	Sample Effort	Sample Results
1009	56.179196	-132.569258	Fish habitat continues beyond pipe. Approximately 20 adult pinks observed about 250 feet upstream of pipe. 7 foot squash, metal pipe. Has at least two grade control baffles one at the inlet and one at the outlet. Baffle at the outlet is a little weird with a 6 inch fall in the middle. Setting minnow trap at inlet due to seeing fish throughout the pipe. Channel is approximately 10 feet wide and mild gradient. Back watered all the way.	6-8	Cobble	Spawning Substrate	2-4	MT	20 P 5 CO 1 CT
1032	56.18072	-132.569648	Nice stream with spawning substrate and great rearing habitat throughout. Spawning pink salmon visually identified as well as as rearing Coho. Continuing upstream	15-20	Large Gravel Small Gravel		1-2	VI	8 P 100+ CO
1033	56.181795	-132.568847	Increases gradient to around 5% here. Small log jam base of gradient increase. CO caught above jam. Continuing upstream.	15-20	Cobble Large Gravel	LWD Log Jams	4-6	EF	2 CO 1 DV
1034	56.182132	-132.568589	Channel has become highly incised in bedrock. Gradient still around 5%. No spawning substrate seen. Base of small bedrock cascade. 25% for 20 feet. CO caught below. Continuing upstream.	15-20	Bedrock Cobble	Incised Channel	4-6	EF	2 CO
1035	56.182333	-132.568304	Bedrock Falls identified. Definite barrier to anadromy. No jump pools with gradient almost vertical for 30 feet. Bedrock chute downstream of falls. No fish caught at base of fall. Highly incised.	15-20	Bedrock Cobble	Incised Channel	45-50	EF	No Fish



Figure 1.—Juvenile coho salmon caught at waypoint 1034.

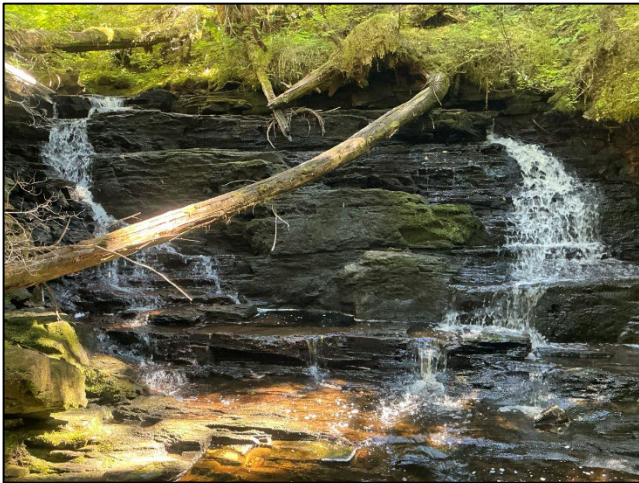


Figure 2.—Bedrock falls identified as barrier to fish passage at waypoint 1035.



Figure 3.—Channel at waypoint 1033.

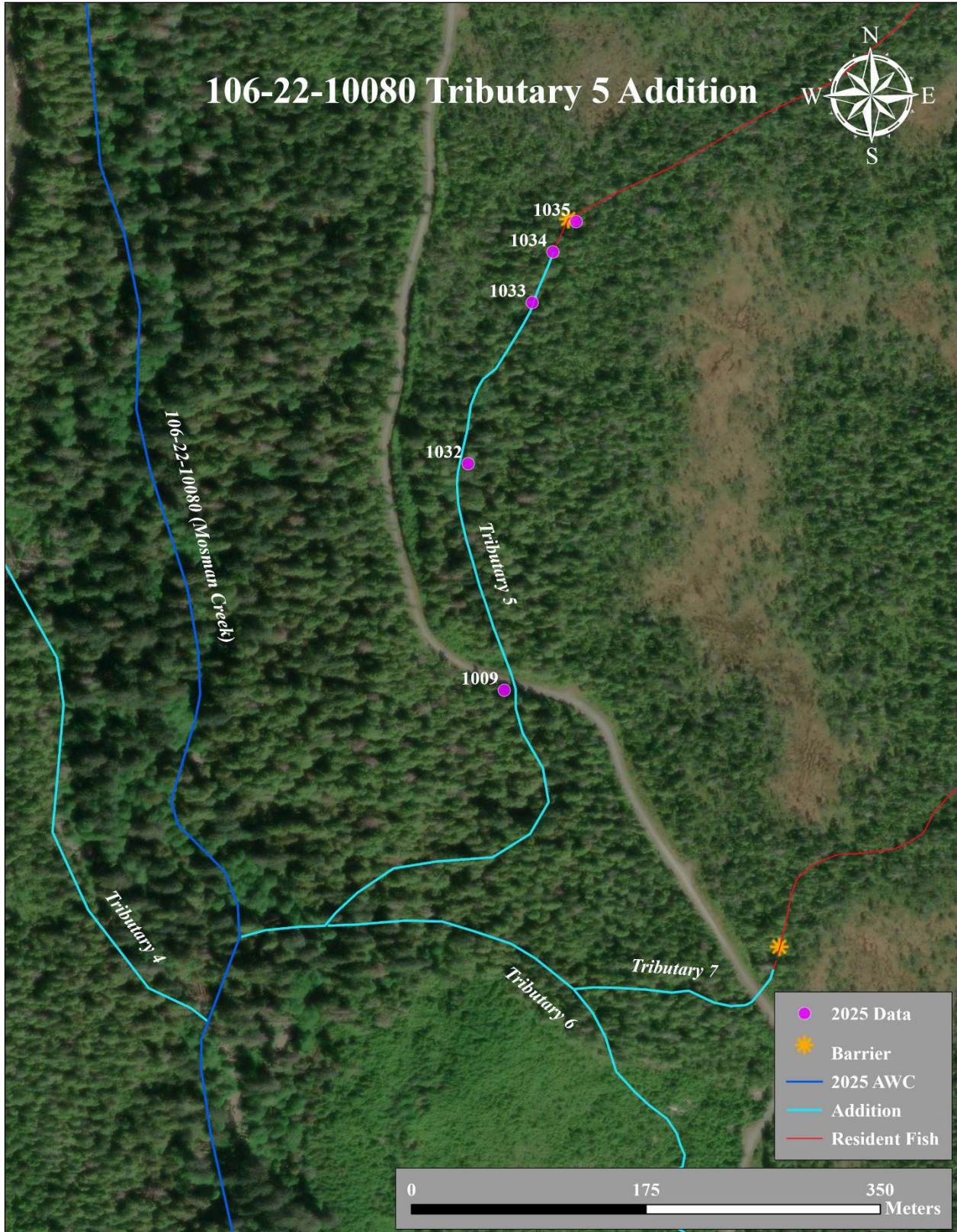


Figure 4.—106-22-10080 Tributary 5 Addition map.